

Vista Software Installation - Quick Start Guide

PC Hardware requirements

Thank you for purchasing and using **GTrek**, in order to use the **GTrek** software your PC should comply with the minimum hardware description below.

PC Requirements	
Minimum Requirements	Recommended Requirements
Windows XP or Vista	Windows XP or Vista
Pentium 4, 1Ghz	Pentium 4, 2.4Ghz or AMD 2400xp+
512MB RAM	1024MB RAM (2048MB RAM for Vista)
100MB Disk space	500MB Disk space
3D Compatible video card	Internet access, DSL 512MB (For Google Earth/Maps only)
800x600, 16 bit colour display	3D Compatible video card, Direct X v9.C
	1024x768 24 bit colour display

Your **GTrek III** kit will contain the following:-

- | | | | |
|---|-----------------------------------|---|--|
| 1 | GTrek III GPS data logger | 2 | USB to mini-USB cable |
| 3 | DC car cigarette lighter adapter | 4 | Li-ion rechargeable battery |
| 5 | Installation CD | 6 | Quick Start guide |
| 7 | Universal main charger (optional) | 8 | Spare Li-ion rechargeable battery (optional) |

Install software prior to connecting your GTrek

Prior to connecting your **GTrek** to your PC you are required to install the application software and device drivers.

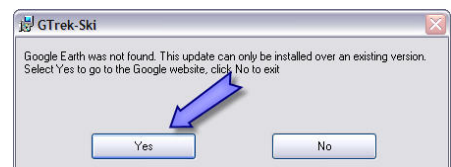
The installation is a simple automated process and should then proceed as follows:

1. Inserting the installation disk into your CD-ROM drive the installation program should run automatically. If not, open "My Computer" and double click startUp.exe on the installation CD.
2. Google Earth is a required component for the **GTrek** application, If already installed this step will be skipped. If it's not found this dialog box will be displayed. Clicking Yes will open the Google Earth webpage where the "**Download Google Earth**" button should be clicked. A connection to the internet is required. Follow the instructions provided. Once complete restart this installation procedure.



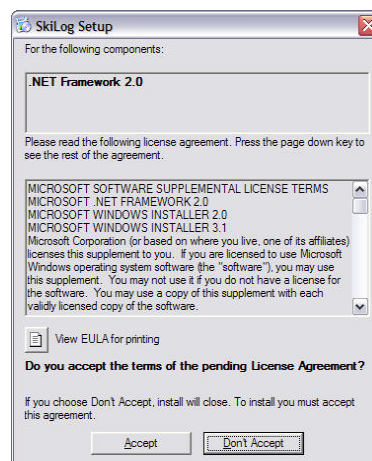
Step 1

3. **GTrek** requires a Microsoft system extension called ".Net Framework 2.0" and needs to be installed and may take a couple of minutes to complete. Click **Accept** and the installation will proceed. ".Net" may already be installed, if so this step will be skipped.



Step 2

4. The Welcome Screen is displayed next, click **Next** to continue
5. The **GTrek End User License Agreement** is displayed next and the user needs to click **I Agree** and **Next** to continue.



Step 3



Step 4



Step 5

6. **GTrek** is normally installed in the default folder, it can be changed if necessary, the default folder is recommended. Microsoft Windows XP and Vista provide support for more than one user; this program can be installed for a single user (default) or can be accessed by all users. This selection can also be made here. Click **Next** to continue.



Step 6



Step 7

7. Confirm Installation, Click **Next** to continue.

8. If the Windows Logo Testing message is displayed click **Continue Anyway**.



Step 8

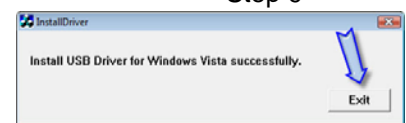
9. **GTrek** will now commence the installation. A progress page will be displayed.



Step 9

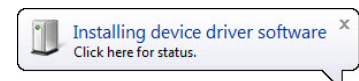
10. The last items to be installed are the device drivers, once completed a notification (step 10) will be displayed. If this box does not appear after a few seconds, it has been noticed that, it may be behind the dialog box of step 9.

11. When the installation has finished click **Close** to complete the task. That concludes the installation and the CD can be removed.



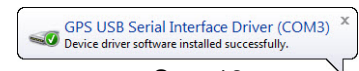
Step 10

12. Insert the battery into your **GTrek** aligning the battery terminals with the contacts, replace the cover, connect your **GTrek** to the PC with the mini USB cable supplied and set the power switch to LOG. A message will be displayed stating that New Hardware has been detected and that is being installed



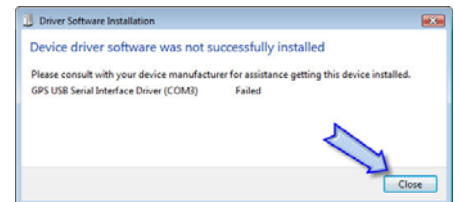
Step 12

13. The installation process will start by searching for the information required, when found, the drivers will be installed.



Step 13

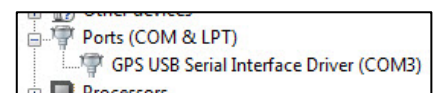
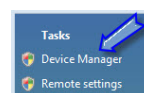
14. It has been noticed on some installations running under the Vista operating system that the driver configuration in step 12 can fail and this message is displayed. If this occurs then this message is displayed, click **Close**, switch of the **GTrek** and after a few seconds switch it back on again and all should be OK.



Step 14

15. To verify the correct driver installation open Device Manager and under the Ports (COM & LPT) section should be GPS USB Serial Interface Driver (COMx).

16. To open the Device Manager click Start, right click Computer and select Properties. On the next screen select Device Manager.



Step 15 & 16

It is recommended that prior to first use, your **GTrek** be configured and initialised. Switch on your **GTrek** and allow it to synchronise with the satellites. Launch the **GTrek** application by double clicking the icon. From the Settings menu select Configure **GTrek** and click **Save**. Your **GTrek** will be configured for use and the on board memory will be cleared.



You will also see an Identification dialog box where your serial number is displayed and you can enter a user name.

The battery should be fully charged before use, the green light will go out to indicate the charging process is complete. Your **GTrek** is now ready to go. Use your **GTrek** and get familiar with it before you get to the slopes or hills or just about anywhere else.

For more information on installation and usage please refer to the **GTrek** manual on the installation CD.